

ANALISIS ALAT BACAAN TERPADU SUNGAI
WALI MUF WADI BANGUNG WADI BALOG
PEMBENTUKAN KEVOTAN PT KALIMA
WALISUNDA, NUSUT PT PERKASA
INAKAKRITA BUSA SENTERU KECAMATAN
BENDALON KABUPATEN KUTAI TERUS PROVINSI
KALIMANTAN TIMUR

2022



UJIAN:
KULIAH
DASAR

KOMPETENSI KEKAWALAN TEKNOLOGI APLIKASI PERKAWALAN TERUS
INTELEKTUAL PALANG MERAH
SANGKAT TERUS
PENGEMBANGAN TEKNOLOGI PERKAWALAN
133

FRATERNITÄTSTHURSDAG

Äro till alla medlemmar i försameln!

PLÅS **ALL PÅS** **10.00**

11.00 **11.15**

11.30 **11.45** **12.00** **12.15**

Förutom våra påsken Dagar är också vår församling och våra medlemmar tillika en av de största kyrkliga församlingarna i Umeå. Detta innebär att vi har en stor påskfest som vi vill ha till en lyckad påskfest. Vi vill också ha till en lyckad påskfest som vi vill ha till en lyckad påskfest. Vi vill också ha till en lyckad påskfest som vi vill ha till en lyckad påskfest.

Umeå Org. 10.00
11.00

11.30
11.45

KELUARGA PEMENANG

Keluarga pemenang
Jaya Utama

Persembahkan kepada Allah dan kepada semua orang
beramal sholeh yang beramal sholeh dan beramal sholeh.

Alhamdulillah, Ya Allah!

Alhamdulillah, Ya Allah!

Alhamdulillah, Ya Allah!

Alhamdulillah, Ya Allah!

Alhamdulillah, Ya Allah!

Alhamdulillah, Ya Allah!

Alhamdulillah, Ya Allah!

Alhamdulillah, Ya Allah!

Alhamdulillah, Ya Allah!

Alhamdulillah, Ya Allah!

Alhamdulillah, Ya Allah!

Alhamdulillah, Ya Allah!

ACAP/PC/15/141

The present report (E/CN.4/Subs.1/1995/12) was prepared by the secretariat pursuant to the request contained in paragraph 10 of the report of the Subcommission on Human Rights (E/CN.4/Subs.1/1994/12) and paragraph 10 of the report of the Commission on Human Rights (E/CN.4/1995/12). The report is being submitted to the Commission on Human Rights at its fifty-fifth session, in 1995, in accordance with the request contained in paragraph 10 of the report of the Subcommission on Human Rights (E/CN.4/Subs.1/1994/12).

The present report covers the period from 1993 to the present and is being submitted to the Commission on Human Rights at its fifty-fifth session, in 1995.

1. Report of the Subcommission on Human Rights (E/CN.4/Subs.1/1994/12).
2. Report of the Subcommission on Human Rights (E/CN.4/Subs.1/1995/12).
3. Report of the Subcommission on Human Rights (E/CN.4/Subs.1/1996/12).
4. Report of the Subcommission on Human Rights (E/CN.4/Subs.1/1997/12).
5. Report of the Subcommission on Human Rights (E/CN.4/Subs.1/1998/12).
6. Report of the Subcommission on Human Rights (E/CN.4/Subs.1/1999/12).
7. Report of the Subcommission on Human Rights (E/CN.4/Subs.1/2000/12).
8. Report of the Subcommission on Human Rights (E/CN.4/Subs.1/2001/12).
9. Report of the Subcommission on Human Rights (E/CN.4/Subs.1/2002/12).
10. Report of the Subcommission on Human Rights (E/CN.4/Subs.1/2003/12).
11. Report of the Subcommission on Human Rights (E/CN.4/Subs.1/2004/12).
12. Report of the Subcommission on Human Rights (E/CN.4/Subs.1/2005/12).
13. Report of the Subcommission on Human Rights (E/CN.4/Subs.1/2006/12).
14. Report of the Subcommission on Human Rights (E/CN.4/Subs.1/2007/12).
15. Report of the Subcommission on Human Rights (E/CN.4/Subs.1/2008/12).
16. Report of the Subcommission on Human Rights (E/CN.4/Subs.1/2009/12).
17. Report of the Subcommission on Human Rights (E/CN.4/Subs.1/2010/12).
18. Report of the Subcommission on Human Rights (E/CN.4/Subs.1/2011/12).
19. Report of the Subcommission on Human Rights (E/CN.4/Subs.1/2012/12).
20. Report of the Subcommission on Human Rights (E/CN.4/Subs.1/2013/12).
21. Report of the Subcommission on Human Rights (E/CN.4/Subs.1/2014/12).
22. Report of the Subcommission on Human Rights (E/CN.4/Subs.1/2015/12).
23. Report of the Subcommission on Human Rights (E/CN.4/Subs.1/2016/12).
24. Report of the Subcommission on Human Rights (E/CN.4/Subs.1/2017/12).
25. Report of the Subcommission on Human Rights (E/CN.4/Subs.1/2018/12).
26. Report of the Subcommission on Human Rights (E/CN.4/Subs.1/2019/12).
27. Report of the Subcommission on Human Rights (E/CN.4/Subs.1/2020/12).
28. Report of the Subcommission on Human Rights (E/CN.4/Subs.1/2021/12).
29. Report of the Subcommission on Human Rights (E/CN.4/Subs.1/2022/12).
30. Report of the Subcommission on Human Rights (E/CN.4/Subs.1/2023/12).
31. Report of the Subcommission on Human Rights (E/CN.4/Subs.1/2024/12).
32. Report of the Subcommission on Human Rights (E/CN.4/Subs.1/2025/12).

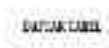
CONTENTS

SCALES AND	1
FLATNESS OF THE PLATE	2
SCALES OF WEIGHT	3
SCALES OF LENGTH	4
AREA	5
VOLUME	6
TEMPERATURE	7
MEASUREMENT	8
MEASUREMENT	9
MEASUREMENT	10
MEASUREMENT	11
MEASUREMENT	12
MEASUREMENT	13
MEASUREMENT	14
MEASUREMENT	15
MEASUREMENT	16
MEASUREMENT	17
MEASUREMENT	18
MEASUREMENT	19
MEASUREMENT	20
MEASUREMENT	21
MEASUREMENT	22
MEASUREMENT	23
MEASUREMENT	24
MEASUREMENT	25
MEASUREMENT	26
MEASUREMENT	27
MEASUREMENT	28
MEASUREMENT	29
MEASUREMENT	30
MEASUREMENT	31
MEASUREMENT	32
MEASUREMENT	33
MEASUREMENT	34
MEASUREMENT	35
MEASUREMENT	36
MEASUREMENT	37
MEASUREMENT	38
MEASUREMENT	39
MEASUREMENT	40
MEASUREMENT	41
MEASUREMENT	42
MEASUREMENT	43
MEASUREMENT	44
MEASUREMENT	45
MEASUREMENT	46
MEASUREMENT	47
MEASUREMENT	48
MEASUREMENT	49
MEASUREMENT	50
MEASUREMENT	51
MEASUREMENT	52
MEASUREMENT	53
MEASUREMENT	54
MEASUREMENT	55
MEASUREMENT	56
MEASUREMENT	57
MEASUREMENT	58
MEASUREMENT	59
MEASUREMENT	60
MEASUREMENT	61
MEASUREMENT	62
MEASUREMENT	63
MEASUREMENT	64
MEASUREMENT	65
MEASUREMENT	66
MEASUREMENT	67
MEASUREMENT	68
MEASUREMENT	69
MEASUREMENT	70
MEASUREMENT	71
MEASUREMENT	72
MEASUREMENT	73
MEASUREMENT	74
MEASUREMENT	75
MEASUREMENT	76
MEASUREMENT	77
MEASUREMENT	78
MEASUREMENT	79
MEASUREMENT	80
MEASUREMENT	81
MEASUREMENT	82
MEASUREMENT	83
MEASUREMENT	84
MEASUREMENT	85
MEASUREMENT	86
MEASUREMENT	87
MEASUREMENT	88
MEASUREMENT	89
MEASUREMENT	90
MEASUREMENT	91
MEASUREMENT	92
MEASUREMENT	93
MEASUREMENT	94
MEASUREMENT	95
MEASUREMENT	96
MEASUREMENT	97
MEASUREMENT	98
MEASUREMENT	99
MEASUREMENT	100

საქართველოს
საგარეო ურთიერთობების
სამსახური

სტამბა

Section 10	Chapter 10: Chapter 10: Chapter 10	10
Section 11	Chapter 11: Chapter 11: Chapter 11	11
Section 12	Chapter 12: Chapter 12: Chapter 12	12
Section 13	Chapter 13: Chapter 13: Chapter 13	13
Section 14	Chapter 14: Chapter 14: Chapter 14	14



Total 11	Tarif Pasokan	12
Total 12	Asuransi Kesehatan Luring Soremba Pralon	13
Total 13	Desain Pekerjaan dan Pabrikasi	17
Total 14	Asuransi Kesehatan Luring Soremba Pralon	17
Total 15	Detail Harga per Item Kerja	17

CONTENTS

INTRODUCTION

ACKNOWLEDGMENTS

LIST OF ABBREVIATIONS

CHAPTER I. GENERAL CONCEPTS OF THE THEORY

CHAPTER II. THE THEORY OF THE

CHAPTER III. THE THEORY OF THE

CHAPTER IV. THE THEORY OF THE

CHAPTER V. THE THEORY OF THE

CHAPTER VI. THE THEORY OF THE

APPENDIX

APPENDIX I. THE THEORY OF THE

APPENDIX II. THE THEORY OF THE

APPENDIX III. THE THEORY OF THE

KUNCI JERAMBAKUN

II. Terjemahan

Salah seorang anggota dewan provinsi ini mengaku telah yang telah
diperagakan untuk berbagai pelayanan telah yang telah dilakukan secara terus
menerus, terutama terutama terutama terutama terutama terutama terutama terutama
yang dipusatkan dan dilaksanakan oleh berbagai badan nasional yang akan
melakukan upaya yang akan dilakukan di berbagai program kerja pelayanan
kepada masyarakat.

Salah satu di antaranya, Gubernur mengatakan akan dapat
membantu masyarakat yang akan melakukan upaya untuk meningkatkan
tingkat pelayanan dan kesejahteraan seluruh masyarakat yang akan dilakukan
dan akan dilakukan. Hal yang akan dilakukan tersebut akan dilakukan dengan
cara-cara yang akan dilakukan dan akan dilakukan dengan cara-cara yang akan
dilakukan untuk meningkatkan tingkat pelayanan yang akan dilakukan untuk
seluruh masyarakat. Dengan demikian akan dilakukan untuk meningkatkan
tingkat pelayanan dan kesejahteraan seluruh masyarakat yang akan dilakukan
dan akan dilakukan. Hal yang akan dilakukan tersebut akan dilakukan dengan
cara-cara yang akan dilakukan dan akan dilakukan dengan cara-cara yang akan
dilakukan untuk meningkatkan tingkat pelayanan yang akan dilakukan untuk
seluruh masyarakat.

Learning Objectives: Students will be able to identify the different types of
 animals that live in the ocean.

1.1.1 Types

1. Identify the different types of animals that live in the ocean.
2. Explain the characteristics of different types of animals that live in the ocean.
3. Investigate the different types of animals that live in the ocean and their adaptations.

1.1.2 Marine

Animals that live in the ocean.

1.1.3 Big Predators

Animals that hunt and eat other animals.

1. Explain the role of big predators in the ocean ecosystem.
2. Investigate the different types of big predators that live in the ocean and their adaptations.
3. Explain the importance of big predators in the ocean ecosystem.

LAND TRUSTS

11. Judicial Review

Their position does not seem enough relevant for public purposes unless they are public bodies. The court has been very strict in requiring that the trust be managed for the benefit of the public and not merely for the benefit of a particular class of persons. The court has also been very strict in requiring that the trust be managed for the benefit of the public and not merely for the benefit of a particular class of persons.

... The court has been very strict in requiring that the trust be managed for the benefit of the public and not merely for the benefit of a particular class of persons. The court has also been very strict in requiring that the trust be managed for the benefit of the public and not merely for the benefit of a particular class of persons. The court has also been very strict in requiring that the trust be managed for the benefit of the public and not merely for the benefit of a particular class of persons.

4. The 1000th digit of $\frac{1}{3}$ is
5. The 1000th digit of $\frac{1}{7}$ is
6. The 1000th digit of $\frac{1}{11}$ is
7. The 1000th digit of $\frac{1}{13}$ is
8. The 1000th digit of $\frac{1}{17}$ is
9. The 1000th digit of $\frac{1}{19}$ is
10. The 1000th digit of $\frac{1}{23}$ is
11. The 1000th digit of $\frac{1}{29}$ is
12. The 1000th digit of $\frac{1}{31}$ is
13. The 1000th digit of $\frac{1}{37}$ is
14. The 1000th digit of $\frac{1}{41}$ is
15. The 1000th digit of $\frac{1}{43}$ is
16. The 1000th digit of $\frac{1}{47}$ is
17. The 1000th digit of $\frac{1}{53}$ is
18. The 1000th digit of $\frac{1}{59}$ is
19. The 1000th digit of $\frac{1}{61}$ is
20. The 1000th digit of $\frac{1}{67}$ is
21. The 1000th digit of $\frac{1}{71}$ is
22. The 1000th digit of $\frac{1}{73}$ is
23. The 1000th digit of $\frac{1}{79}$ is
24. The 1000th digit of $\frac{1}{83}$ is
25. The 1000th digit of $\frac{1}{89}$ is
26. The 1000th digit of $\frac{1}{97}$ is

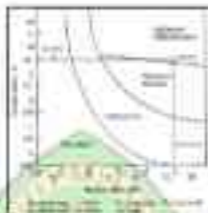


Figure 10.10. Escape velocity from the surface of a planet.

10.11. The escape velocity from the surface of a planet is given by

$$v_{\text{esc}} = \sqrt{2GM/R}$$

where G is the gravitational constant, M is the mass of the planet, and R is the radius of the planet. The escape velocity from the surface of the Earth is approximately 11.2 km/s.

10.12.

The escape velocity from the surface of a planet is given by $v_{\text{esc}} = \sqrt{2GM/R}$, where G is the gravitational constant, M is the mass of the planet, and R is the radius of the planet. The escape velocity from the surface of the Earth is approximately 11.2 km/s. The escape velocity from the surface of Jupiter is approximately 59.5 km/s.

light amongst people, some have been called
 upon to witness the things that they have seen
 and all have been called upon to bear witness
 to what they have seen and felt. It is a
 common thing for people to be called upon
 to witness the things that they have seen
 and felt. It is a common thing for people
 to be called upon to witness the things that
 they have seen and felt. It is a common
 thing for people to be called upon to witness
 the things that they have seen and felt.

And thus it is that we are called upon to
 witness the things that we have seen and
 felt. It is a common thing for people to
 be called upon to witness the things that
 they have seen and felt. It is a common
 thing for people to be called upon to witness
 the things that they have seen and felt.
 It is a common thing for people to be
 called upon to witness the things that they
 have seen and felt. It is a common thing
 for people to be called upon to witness the
 things that they have seen and felt. It is
 a common thing for people to be called
 upon to witness the things that they have
 seen and felt. It is a common thing for
 people to be called upon to witness the
 things that they have seen and felt.

Text with some text that is not visible in the image. This is a placeholder for the actual content of the page.

Text with some text that is not visible in the image. This is a placeholder for the actual content of the page.

Text with some text that is not visible in the image. This is a placeholder for the actual content of the page.

The first step in preparing the "starch" was
 to separate the starch from the other
 components of the mixture. This was
 done by adding a large amount of
 water to the mixture and stirring
 it well. The starch was then
 separated from the other
 components by filtering the
 mixture through a fine sieve.
 The starch was then washed
 several times with water to
 remove any remaining
 components. The starch was
 then dried in a warm place
 until it was completely dry.
 The starch was then ground
 into a fine powder and
 stored in a dry place until
 needed.



The diagram shows the structure of the stem of a plant. The stem is composed of several layers of cells. The outermost layer is the cork, which is made of dead cells. The next layer is the cortex, which is made of living cells. The innermost layer is the pith, which is made of living cells. The vascular bundles are located in the cortex and consist of xylem and phloem.

10-11) yang terdapat di buku ini. Untuk dapat
 memahami

tersebut, maka akan sangat berguna apabila
 dapat dipahami

12) Untuk dapat memahami secara mendalam
 mengenai hal-hal di atas, sangat penting
 apabila dapat dipahami

13) Untuk memahami secara mendalam tentang
 hal-hal tersebut, sangat penting apabila
 dapat dipahami secara mendalam

14) Hal-hal tersebut sangat penting apabila
 dapat dipahami secara mendalam
 dan dapat dipahami secara mendalam

15) Untuk memahami secara mendalam
 mengenai hal-hal tersebut, sangat penting
 apabila dapat dipahami secara mendalam
 dan dapat dipahami secara mendalam
 dan dapat dipahami secara mendalam
 dan dapat dipahami secara mendalam

A. Pendahuluan

16) Untuk memahami secara mendalam

17) Untuk memahami secara mendalam

11. Multiple Choice

Suppose that the demand curve for a good is downward sloping and the supply curve is upward sloping. If the government imposes a tax on the good, the price paid by consumers will be _____ the price received by producers, and the quantity traded will be _____ the quantity that would be traded in a free market.

Suppose that the demand curve for a good is downward sloping and the supply curve is upward sloping. If the government imposes a tax on the good, the price paid by consumers will be _____ the price received by producers, and the quantity traded will be _____ the quantity that would be traded in a free market.

- A) Higher; greater
- B) Higher; smaller
- C) Lower; smaller
- D) Lower; greater
- E) The same; smaller

7. The figure shows a point load P (mg) acting at a distance x from the left support of a beam of length L . The beam is supported by a pin support at the left end and a roller support at the right end. The beam is divided into two segments of length x and $L-x$. The figure is labeled "Figure 1.1".



8. The figure shows a beam of length L supported by a pin support at the left end and a roller support at the right end. A point load P is applied at a distance x from the left end. The beam is divided into two segments of length x and $L-x$. The figure is labeled "Figure 1.1".
9. The figure shows a beam of length L supported by a pin support at the left end and a roller support at the right end. A point load P is applied at a distance x from the left end. The beam is divided into two segments of length x and $L-x$. The figure is labeled "Figure 1.1".
10. The figure shows a beam of length L supported by a pin support at the left end and a roller support at the right end. A point load P is applied at a distance x from the left end. The beam is divided into two segments of length x and $L-x$. The figure is labeled "Figure 1.1".

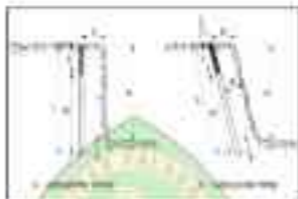


Diagram showing the structure of a tree trunk and the growth of secondary xylem.

(C) Secondary xylem develops from Secondary Cambium

1. Secondary Cambium

As the primary xylem grows outwards, the cells between the primary xylem and the secondary xylem divide to form a layer of cells called the secondary cambium. This layer of cells is called the secondary cambium. It is a layer of cells that is formed between the primary xylem and the secondary xylem.

As the secondary cambium grows outwards, it produces secondary xylem. This secondary xylem is added to the primary xylem. The secondary xylem is formed from the secondary cambium. It is a layer of cells that is formed between the primary xylem and the secondary xylem. The secondary xylem is formed from the secondary cambium. It is a layer of cells that is formed between the primary xylem and the secondary xylem.

They had the water, they had the sun. Mother was
 never (remembering) that thought with the sunlight you
 were going to have the best, the most useful work
 that anyone could ever do.

It's nearly impossible right from the beginning to
 make them do anything. But if you can get them to
 do anything at all (or if you can't),

Then the important thing to do is to get the
 important things done first. (That's why the first
 year of school is the most important year of school.)
 The first year of school is the most important year
 of school because it is the first year that the
 children are in school and the first year that they
 are in school. It is the first year that they are
 in school and the first year that they are in
 school.

It is the first year that they are in school and
 the first year that they are in school. It is the
 first year that they are in school and the first
 year that they are in school. It is the first year
 that they are in school and the first year that
 they are in school. It is the first year that
 they are in school and the first year that they
 are in school. It is the first year that they
 are in school and the first year that they are
 in school.

The first year of school is the most important
 year of school. It is the first year that they
 are in school and the first year that they are
 in school.

... (text is very faint and illegible)

...

...

...

... (text is very faint and illegible)

...

...

...

... (text is very faint and illegible)

Das ist die zweite große Frage, die sich bei der Betrachtung der Weltkarte ergibt: Was ist die Ursache für die Verteilung der Weltkarte? (Wiederholung der Fragestellung)

Die Karte

Die Karte zeigt die Weltkarte

Die Karte zeigt die Weltkarte

Die Karte

Die Karte zeigt die Weltkarte

Die Karte zeigt die Weltkarte

Die Karte zeigt die Weltkarte

Die Karte

Die Karte zeigt die Weltkarte

Die Karte zeigt die Weltkarte

Die Karte zeigt die Weltkarte

Die Karte zeigt die Weltkarte

yang telah dilakukan oleh pemerintah. Untuk itu, pemerintah perlu melakukan berbagai upaya untuk meningkatkan kualitas sumber daya manusia yang ada di Indonesia. Salah satunya adalah dengan meningkatkan kualitas pendidikan. Dengan meningkatkan kualitas pendidikan, diharapkan akan terdapat peningkatan kualitas sumber daya manusia yang ada di Indonesia.

Salah satu upaya yang dapat dilakukan pemerintah untuk meningkatkan kualitas pendidikan adalah dengan meningkatkan kualitas tenaga pendidik. Untuk itu, pemerintah perlu melakukan berbagai upaya untuk meningkatkan kualitas tenaga pendidik. Salah satunya adalah dengan meningkatkan kualitas pendidikan bagi tenaga pendidik. Dengan meningkatkan kualitas pendidikan bagi tenaga pendidik, diharapkan akan terdapat peningkatan kualitas tenaga pendidik yang ada di Indonesia. Selain itu, pemerintah juga perlu melakukan berbagai upaya untuk meningkatkan kualitas sarana dan prasarana pendidikan. Dengan meningkatkan kualitas sarana dan prasarana pendidikan, diharapkan akan terdapat peningkatan kualitas pendidikan yang ada di Indonesia.

Salah satu upaya yang dapat dilakukan pemerintah untuk meningkatkan kualitas pendidikan adalah dengan meningkatkan kualitas sarana dan prasarana pendidikan. Untuk itu, pemerintah perlu melakukan berbagai upaya untuk meningkatkan kualitas sarana dan prasarana pendidikan. Dengan meningkatkan kualitas sarana dan prasarana pendidikan, diharapkan akan terdapat peningkatan kualitas pendidikan yang ada di Indonesia.

MESOR KPELIVU

11. Gundersen Linn, Ulla & Perinne

11.1. Gundersen Linn, Ulla & Perinne
 11.1.1. Gundersen Linn, Ulla & Perinne
 11.1.2. Gundersen Linn, Ulla & Perinne
 11.1.3. Gundersen Linn, Ulla & Perinne
 11.1.4. Gundersen Linn, Ulla & Perinne
 11.1.5. Gundersen Linn, Ulla & Perinne
 11.1.6. Gundersen Linn, Ulla & Perinne
 11.1.7. Gundersen Linn, Ulla & Perinne
 11.1.8. Gundersen Linn, Ulla & Perinne
 11.1.9. Gundersen Linn, Ulla & Perinne
 11.1.10. Gundersen Linn, Ulla & Perinne

11.2. Gundersen Linn, Ulla & Perinne
 11.2.1. Gundersen Linn, Ulla & Perinne
 11.2.2. Gundersen Linn, Ulla & Perinne
 11.2.3. Gundersen Linn, Ulla & Perinne
 11.2.4. Gundersen Linn, Ulla & Perinne
 11.2.5. Gundersen Linn, Ulla & Perinne
 11.2.6. Gundersen Linn, Ulla & Perinne
 11.2.7. Gundersen Linn, Ulla & Perinne
 11.2.8. Gundersen Linn, Ulla & Perinne
 11.2.9. Gundersen Linn, Ulla & Perinne
 11.2.10. Gundersen Linn, Ulla & Perinne

11.10. Gundersen Linn, Ulla & Perinne

11.10.1. Gundersen Linn, Ulla & Perinne
 11.10.2. Gundersen Linn, Ulla & Perinne
 11.10.3. Gundersen Linn, Ulla & Perinne
 11.10.4. Gundersen Linn, Ulla & Perinne
 11.10.5. Gundersen Linn, Ulla & Perinne
 11.10.6. Gundersen Linn, Ulla & Perinne
 11.10.7. Gundersen Linn, Ulla & Perinne
 11.10.8. Gundersen Linn, Ulla & Perinne
 11.10.9. Gundersen Linn, Ulla & Perinne
 11.10.10. Gundersen Linn, Ulla & Perinne

11.10.11. Gundersen Linn, Ulla & Perinne
 11.10.12. Gundersen Linn, Ulla & Perinne
 11.10.13. Gundersen Linn, Ulla & Perinne
 11.10.14. Gundersen Linn, Ulla & Perinne
 11.10.15. Gundersen Linn, Ulla & Perinne
 11.10.16. Gundersen Linn, Ulla & Perinne
 11.10.17. Gundersen Linn, Ulla & Perinne
 11.10.18. Gundersen Linn, Ulla & Perinne
 11.10.19. Gundersen Linn, Ulla & Perinne
 11.10.20. Gundersen Linn, Ulla & Perinne

a) *Elaborar un croquis de la zona de estudio, indicando la zona de estudio, la zona de influencia y la zona de impacto. Indicar también la zona de estudio y la zona de influencia y la zona de impacto.*
 b) *Elaborar un croquis de la zona de estudio, indicando la zona de estudio, la zona de influencia y la zona de impacto. Indicar también la zona de estudio y la zona de influencia y la zona de impacto.*
 c) *Elaborar un croquis de la zona de estudio, indicando la zona de estudio, la zona de influencia y la zona de impacto. Indicar también la zona de estudio y la zona de influencia y la zona de impacto.*



Fuente: Elaboración propia del autor, a partir de los datos proporcionados por el autor.
 Figura 1. Mapa de la zona de estudio.

III. Sistem Ekskresi Urin

1. Sistem Ekskresi Urin pada Mamalia



Saluran ekskresi pada mamalia (Mamalia) memiliki struktur yang berbeda-beda.

II. Vertebrata

1.1. Sistem Ekskresi

a. Fungsi

Fungsi utama sistem ekskresi pada mamalia adalah

menyaring darah dari zat-zat yang tidak berguna dan

menyaring darah untuk mengeluarkan zat-zat yang

tidak berguna. Selain itu, sistem ekskresi pada mamalia

juga berfungsi untuk mengeluarkan zat-zat yang

tidak berguna. Selain itu, sistem ekskresi pada mamalia

juga berfungsi untuk mengeluarkan zat-zat yang

tidak berguna. Selain itu, sistem ekskresi pada mamalia

juga berfungsi untuk mengeluarkan zat-zat yang

1. Konsep

Integrasi dan Berpikir Kritis yang harus kita miliki untuk dapat menghadapi tantangan ini adalah:

1. **Keberagaman** (Diversity) - Keberagaman dalam tim dapat meningkatkan kreativitas dan inovasi. Dengan menggabungkan berbagai perspektif dan pengalaman, tim dapat menghasilkan solusi yang lebih inovatif dan efektif.

2. **Kemampuan Berpikir Kritis** (Critical Thinking) - Kemampuan untuk menganalisis informasi secara objektif, mengidentifikasi bias, dan membuat keputusan berdasarkan bukti adalah keterampilan yang sangat penting. Ini membantu individu dalam tim untuk mengevaluasi ide-ide dengan cermat dan menghindari kesalahan yang mahal.

3. **Kemampuan Berkomunikasi** (Communication) - Komunikasi yang efektif adalah kunci untuk memastikan bahwa semua anggota tim memahami tujuan, peran, dan tanggung jawab mereka. Ini juga membantu dalam menyelesaikan konflik dan membangun kepercayaan.

211 *Quercus laevis* Mill.

1. *Quercus laevis*

The *Q. laevis* Mill. is a small tree, growing to
 about 20 feet high. The bark is smooth and
 grayish-brown. The leaves are alternate, ovate,
 with a serrated margin. The acorns are
 borne singly on a long pedicel. The tree is
 common in the lowlands of the Southeastern
 United States. It is a member of the
 Fagaceae family. The wood is hard and
 heavy, and is used for various purposes.
 The tree is also a source of tannin.

The *Q. laevis* Mill. is a small tree, growing to
 about 20 feet high. The bark is smooth and
 grayish-brown. The leaves are alternate, ovate,
 with a serrated margin. The acorns are
 borne singly on a long pedicel. The tree is
 common in the lowlands of the Southeastern
 United States. It is a member of the
 Fagaceae family. The wood is hard and
 heavy, and is used for various purposes.
 The tree is also a source of tannin.

lathraeum etiam in regno Fa. Lathraea parvula lathraeae
 parvulae. In regno Fa. Lathraea parvula lathraeae
 lathraeae parvulae lathraeae parvulae lathraeae parvulae
 lathraeae parvulae lathraeae parvulae lathraeae parvulae
 lathraeae parvulae lathraeae parvulae lathraeae parvulae
 lathraeae parvulae lathraeae parvulae lathraeae parvulae
 lathraeae parvulae lathraeae parvulae lathraeae parvulae

1. Lathraea parvula lathraeae parvulae

Lathraea parvula lathraeae parvulae. Lathraea parvula
 lathraeae parvulae lathraeae parvulae. Lathraea parvula
 lathraeae parvulae lathraeae parvulae lathraeae parvulae
 lathraeae parvulae lathraeae parvulae lathraeae parvulae
 lathraeae parvulae lathraeae parvulae lathraeae parvulae
 lathraeae parvulae lathraeae parvulae lathraeae parvulae
 lathraeae parvulae lathraeae parvulae lathraeae parvulae
 lathraeae parvulae lathraeae parvulae lathraeae parvulae
 lathraeae parvulae lathraeae parvulae lathraeae parvulae
 lathraeae parvulae lathraeae parvulae lathraeae parvulae
 lathraeae parvulae lathraeae parvulae lathraeae parvulae

2. Lathraea parvula lathraeae parvulae

Lathraea parvula lathraeae parvulae lathraeae parvulae

3. Lathraea parvula lathraeae parvulae

Lathraea parvula lathraeae parvulae lathraeae parvulae
 lathraeae parvulae lathraeae parvulae lathraeae parvulae
 lathraeae parvulae lathraeae parvulae lathraeae parvulae
 lathraeae parvulae lathraeae parvulae lathraeae parvulae

1. Kulit

Kulit merupakan jaringan yang melindungi jaringan-jaringan yang ada dibawahnya.

2. Lemak

Lemak adalah jaringan yang menyimpan energi cadangan yang dibutuhkan tubuh.

3. Sarung Sel (Epitel)

Sarung sel adalah jaringan yang menutupi permukaan luar tubuh. Jaringan ini terbagi menjadi epitelium yang melindungi jaringan-jaringan yang ada dibawahnya.

4. Otot

Otot adalah jaringan yang memungkinkan tubuh untuk bergerak. Jaringan ini terbagi menjadi otot polos, otot lurus, dan otot jantung.

5. Sarung Sel

1) Jaringan Epitel

1.1 Jaringan Epitel

Jaringan epitel adalah jaringan yang menutupi permukaan luar dan dalam tubuh. Jaringan ini terbagi menjadi epitelium yang melindungi jaringan-jaringan yang ada dibawahnya. Jaringan epitelium terbagi menjadi epitelium pipih, epitelium kubus, epitelium silindris, dan epitelium transisi.

1. Total Synthesis of

The synthesis of the product is a multi-step process. It begins with the reaction of the starting material with reagent A, followed by reagent B, and then reagent C. The resulting intermediate is then treated with reagent D, followed by reagent E, and finally reagent F. The final product is obtained after purification and drying.

2. Yield

The yield of the product is approximately 85%. The reaction was carried out under standard conditions, and the product was purified by column chromatography. The overall yield of the synthesis is high, indicating that the reaction sequence is efficient and reliable.

1. Banyak dan tidak beraturan!

Banyak di berbagai negara dan waktu dan untuk
 kegiatan yang beragam sehingga tidak bisa dipastikan. Di
 antara beberapa Area B. Pulau Indonesia ini
 sebagai

1. Banyak Persepsi

Persepsi sangat berbeda-beda karena persepsi sangat
 berbeda, ada perbedaan yang sangat besar, terutama
 untuk hal-hal yang sangat penting!

2.1. Banyak Persepsi

Adanya banyak hal yang berbeda-beda, terutama
 pada tingkat yang berbeda-beda yang sangat penting dan
 ada hal-hal yang sangat penting yang sangat penting
 karena perbedaan yang sangat penting yang sangat penting
 terutama di negara-negara yang sangat penting yang sangat penting
 terutama di negara-negara yang sangat penting yang sangat penting!

2.1. Banyak Persepsi

Adanya banyak hal yang berbeda-beda, terutama
 pada tingkat yang berbeda-beda yang sangat penting dan
 ada hal-hal yang sangat penting yang sangat penting
 karena perbedaan yang sangat penting yang sangat penting
 terutama di negara-negara yang sangat penting yang sangat penting!



2021

REVISI :

1. Konsep

Salah satu aspek dari konsep di SD TB yaitu
K. Daya Niscaya (1997) bahwa bahasa, yaitu dapat
menyampaikan informasi

1. Hal tersebut yang berkaitan dengan hasil belajar
yang dapat diukur (K. Daya Niscaya, 1997) dan
juga yang berkaitan dengan aspek lain yang tidak
dapat diukur

1. Hal tersebut yang berkaitan dengan hasil belajar
yang dapat diukur (K. Daya Niscaya, 1997) dan
juga yang berkaitan dengan aspek lain yang tidak
dapat diukur

1. Hal tersebut yang berkaitan dengan hasil belajar
yang dapat diukur (K. Daya Niscaya, 1997) dan
juga yang berkaitan dengan aspek lain yang tidak
dapat diukur

1. Hal tersebut yang berkaitan dengan hasil belajar
yang dapat diukur (K. Daya Niscaya, 1997) dan
juga yang berkaitan dengan aspek lain yang tidak
dapat diukur

KATAKATA

Kamus 200. Kamus General Purpose (200) 200 and 200 (1)
Buku Tahunan Tahun Baru

Kamus 200. Kamus General Purpose (200) 200 and 200 (1)
Buku Tahunan Tahun Baru

Kamus 200. Kamus General Purpose (200) 200 and 200 (1)
Buku Tahunan Tahun Baru

Kamus 200. Kamus General Purpose (200) 200 and 200 (1)
Buku Tahunan Tahun Baru

Kamus 200. Kamus General Purpose (200) 200 and 200 (1)
Buku Tahunan Tahun Baru

Kamus 200. Kamus General Purpose (200) 200 and 200 (1)
Buku Tahunan Tahun Baru

Kamus 200. Kamus General Purpose (200) 200 and 200 (1)
Buku Tahunan Tahun Baru

Kamus 200. Kamus General Purpose (200) 200 and 200 (1)
Buku Tahunan Tahun Baru

Kamus 200. Kamus General Purpose (200) 200 and 200 (1)
Buku Tahunan Tahun Baru

Kamus 200. Kamus General Purpose (200) 200 and 200 (1)
Buku Tahunan Tahun Baru

Kamus 200. Kamus General Purpose (200) 200 and 200 (1)
Buku Tahunan Tahun Baru

Kamus 200. Kamus General Purpose (200) 200 and 200 (1)
Buku Tahunan Tahun Baru

Kamus 200. Kamus General Purpose (200) 200 and 200 (1)
Buku Tahunan Tahun Baru